



TRAFFIC SAFETY
SUPPLY COMPANY

Balloon Light - 500

Glare-Free Safety Lighting

»»» IMPROVING TODAY FOR A SAFER TOMORROW

PRODUCT OVERVIEW

PRODUCT NO. - DP08242

Balloon lights offer 360-degree diffused light. Whether used for construction or safety and rescue, high quality lighting is vital to creating a safe working environment.

FEATURES & BENEFITS

- 360-degree diffused light
- No shadowing
- Extra bright output
- Quick & easy set up
- Portable & Lightweight
- Rain, dust, and fire-resistant
- Envelope variants available:
lenticular, reversed reflector, logo
personalization, modifiable reflector

APPLICATIONS

WORK LIGHTING

- Construction
- Roads & Traffic
- Agriculture
- Oil & Gas
- Mining

EMERGENCY LIGHTING

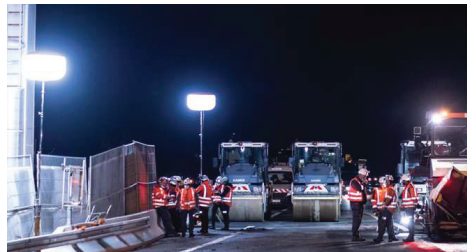
- Fire & Rescue
- EMS
- Emergency Preparedness
- Disaster Recovery

SECURITY LIGHTING

- Law Enforcement
- Military Defense



Stand & sand bags not included



The specifications provided are approximate and subject to change. Graphics and illustrations are intended for illustrative purposes only.

If it's not right, we'll make it right - since 1956.

Copyright 2025, Traffic Safety Supply Company.

2324 SE Umatilla Street, Portland, OR 97202 / +1 503.235.8531 / 1.800.547.8518 / TSSCO.COM





TRAFFIC SAFETY
SUPPLY COMPANY

Balloon Light - 500

Glare-Free Safety Lighting

»» IMPROVING TODAY FOR A SAFER TOMORROW

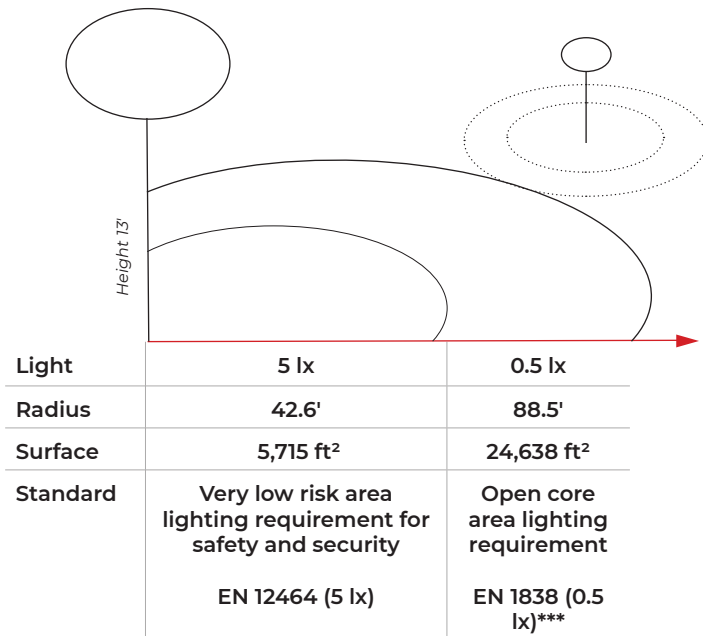


Lighting Data	
Light Engine	Airstar LED Matrix 8 x 5 500 lm
Maximum lumen	44,000 lm
Average LED life*	50,000 h
Color Temperature: daylight	5,000 K
CRI	70
Light under the balloon** (7.2 ft high)	24.4 fc

*Under normal conditions of use **Lenticular Envelope

Technical Data	
Wind Resistance	50 mph
Power Consumption	294 W
Efficiency	150 lm/W
Available Voltage	50-60 Hz
Recommended Battery	52 V
Certifications	IEC-60598-1, CE, IP54
Flame-Retardant Fabric	

Dimensions and Packaging	
Envelope Size	ø 33" / h 19"
Net Weight of Balloon	7.8#
Transport Bag Dimensions	22 x 10 x 10"
Transport Gross Weight	18.5#
Included in the transport bag: Full set lighting balloon with 1x standard envelope (without stand), 1x power cord (29'), 1x quick-start guide, 1x envelope repair patch kit, 1x battery power cord (optional with PowerSwitch) 52 V	



***Standard Envelope

The specifications provided are approximate and subject to change. Graphics and illustrations are intended for illustrative purposes only.

If it's not right, we'll make it right - since 1956.

Copyright 2025, Traffic Safety Supply Company.

2324 SE Umatilla Street, Portland, OR 97202 / +1 503.235.8531 / 1.800.547.8518 / TSSCO.COM

