

Breakaway Pedestal Base



**TRAFFIC SAFETY
SUPPLY COMPANY**



PRODUCT DESCRIPTION

This cast aluminum pedestal mount, is attached by four internal anchor bolts, secured in a concrete foundation. The pedestal has a large 8.5" square hand hole cover, allowing access to the interior of the base, for easy cable splicing and anchor bolt attachment. This pedestal is primarily used in ITS applications.

AT-A-GLANCE

Round Aluminum Pole

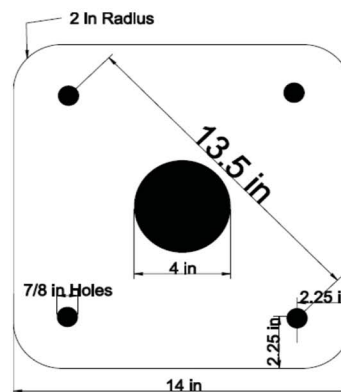
Schedule 40 aluminum pole, 4 1/2 " outer diameter one end threaded.

Pedestal Base

Cast aluminum, threaded collar, aluminum access door, FHWA.

Bent Anchor Bolts

(4X) 3/4" x 18", galvanized steel bent anchor (foundation bolt), nut and washer (for frost free areas).



Template provided with base

Breakaway Pedestal Base



TRAFFIC SAFETY
SUPPLY COMPANY

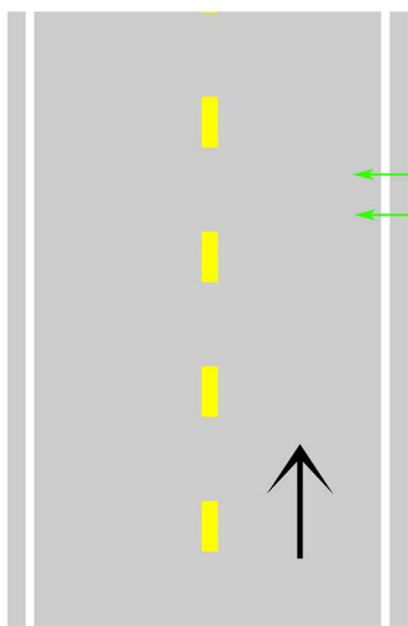
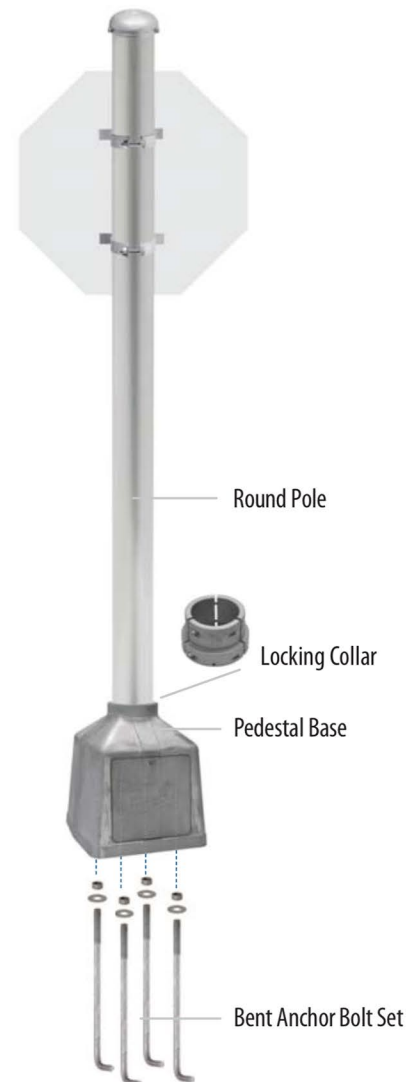
FOUNDATION FOR BREAKAWAY BASE

A foundation should be poured in accordance with local engineering guidelines for proper depth and space. A suggested foundation size for this system is 24" round by 48" deep. Areas with soft soil conditions or high wind areas should consider pouring a larger foundation. Each system comes complete with four J-bolts that will be set into the foundation when it is poured. Proper care should be taken while setting the J-bolts into the wet concrete to ensure the threaded studs of the j-bolts and the surface of the concrete base are level. The threaded ends of the J-bolts should protrude five inches above the surface of the finished concrete.

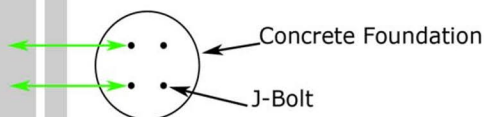
**Minor leveling adjustments may be made with the additional nuts and washers provided with the J- bolts. The minor adjustments may be required to ensure that the upright post is perpendicular to the road surface.*

When base is installed onto the concrete foundation, this placement allows for proper alignment of flashing beacons to oncoming traffic.

**Adjustments may be made by tightening or loosening pole in pedestal base. Once desired orientation between device and roadway is achieved, locking collar may be used to ensure post does not rotate out of alignment with the road.*



J-bolts MUST be installed into concrete foundation perpendicular to roadway.



Note: Anti-seize lubricant should be used on threaded portion of post to ensure that threads seat properly and galling does not inhibit post from properly seating into base. A strap wrench should be used to thoroughly tighten post and base.