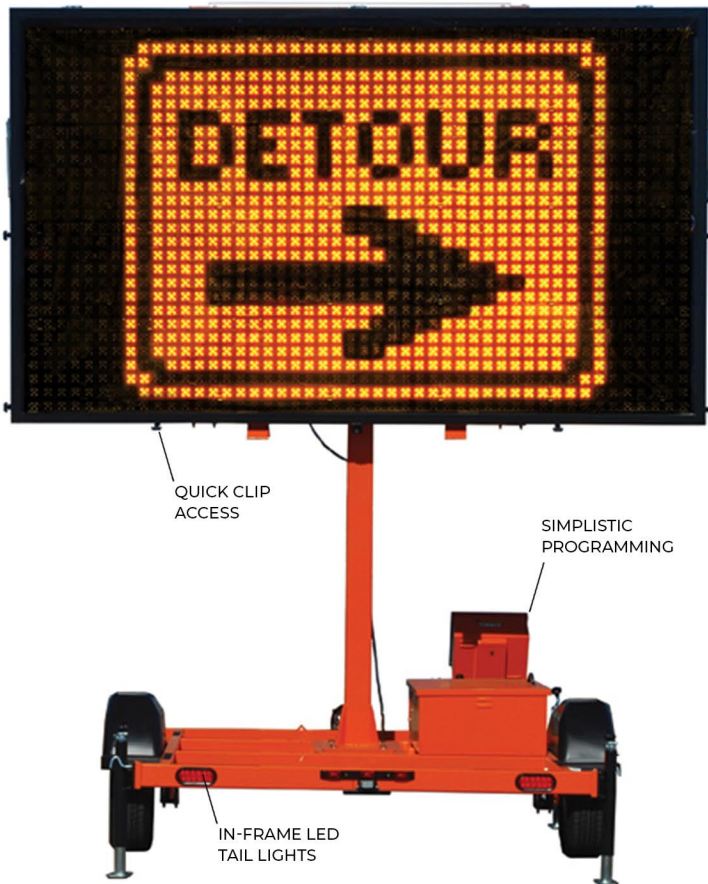


# SMC 2000 FM ST

## Full-Matrix Mini Message Centers



TRAFFIC SAFETY  
SUPPLY COMPANY



THE SMC 2000 FM ST  
SHOWN IN TRAVEL POSITION

## DESCRIPTION

Manufactured to the same quality standards Work Area Protection is recognized for, the SMC 2000 FM ST meets all the requirements of the MUTCD, while offering unparalleled ease of maintenance and programming.

## SIGN FLEXIBILITY RAMMIN

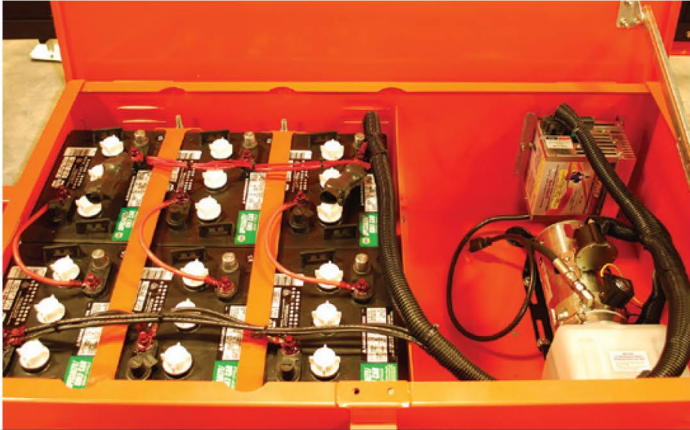
- 5 LEDs per pixel provide uniform light output
- Energy-efficient LED display provides minimal battery maintenance and long operational life
- Automatic intensity control provides optimum LED intensity
- Industrial-grade trailer provides stable platform
- Powder-coat finish for improved fade and scratch resistance
- Calendar programming capability
- Full-Matrix display provides graphic messages and arrow board capability
- Durable in-frame LED tail lights
- On-board charger provides option of solar or AC charging
- Quick-clip access for ease of display maintenance
- State-of-the-art charge technology reduces battery overcharge incidents
- Remote programming option available
- On-board dedicated NTCIP controller provides simplistic programming with secure password protection
- 5-year standard warranty

**Note: Specifications are approximate and subject to change. Some parts shown may be for illustration purposes only.**

# SMC 2000 FM ST Full-Matrix Mini Message Centers



**TRAFFIC SAFETY  
SUPPLY COMPANY**



## SMC 2000 FM ST UNIT SPECIFICATIONS

Raised Height	163" (4.14 m)
Travel Height	104" (2.64 m)
Width	96" (2.43 m)
Length with tongue	168" (4.26 m)
Length w/o tongue	134" (3.4 m)
Weight	1875 lbs (850.5 Kg)
Energy Source	(6) 6-volt Deep Cycle batteries
Generator	solar panel array - 140 Watt
Operating Temperature Range	Leak-resistant electro-hydraulic
Lift Mechanism	1,500 lbs brake winch
Main Frame	2" x 4" x .120" high-grade steel

## SIGN CASE SPECIFICATIONS

Height	79.5" (2.02 m)
Width	133" (3.38 m)
Character Height	18" (46 cm)
Lamp	LED (5 per pixel)
Legibility	1000 ft (304 m)

## SMC COMPUTER SPECIFICATIONS

Control Console Display	LCD
Preprogrammed Messages	250
User-programmed Messages	100
NTCIP-compliant software	
Update Speed	100 Milliseconds
Removable Solid State Design	
Off-the-shelf QWERTY keyboard	

**Note: Specifications are approximate and subject to change. Some parts shown may be for illustration purposes only.**

## FULL-MATRIX DESIGN MMIN

The continuous, full-matrix design allows the display of messages using text, graphic symbols or both. Graphic symbols are displayed at a standard 50-inch height and text

## LED LAMP PIXEL DESIGN

The SMC 2000 FM ST uses 5 high-intensity, solid-state LEDs per 2-inch pixel. This creates a more uniform light output in each pixel, resulting in increased message definition and distance legibility.

## STANDARD NTCIP-COMPLIANT

A user-friendly, NTCIP-compliant, dedicated computer designed by Precision Solar Controls reduces the number of keys required to program the SMC 2000 FM ST.

## FULL-MATRIX DISPLAY

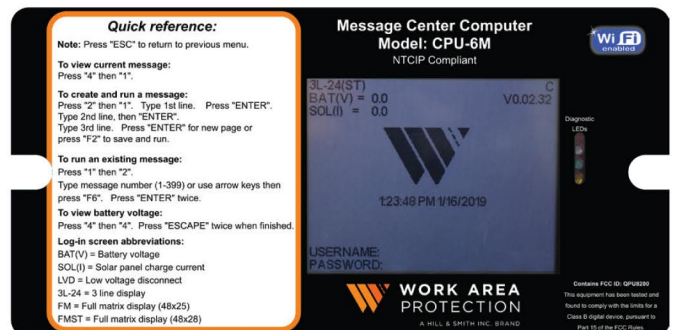
The SMC 2000 FM ST provides 250 text, 60 graphic and 20 arrow board display messages preprogrammed and stored in the controller. Additionally, 100 user-created messages can be programmed and stored.

## INDUSTRIAL-GRADE STRUCTURAL STEEL TRAILER

The SMC 2000 FM ST uses a durable trailer system designed to provide years of dependable service. The trailer's high-quality powder-coat finish, 2"x 4" 11-gauge steel frame and a 3,500-pound suspension system enhance the overall quality of the unit.

## MODULAR ELECTRONIC COMPONENTRY

The entire system was developed with the operator/end user in mind. Electronic components are easily replaced, reducing downtime and maintenance costs. This modularity also improves system diagnostics.



### Quick reference:

Note: Press "ESC" to return to previous menu.

To view current message:  
Press "4" then "1".

To create and run a message:  
Press "2" then "1". Type 1st line. Press "ENTER".  
Type 2nd line, then "ENTER".  
Type 3rd line. Press "ENTER" for new page or  
press "F2" to save and run.

To run an existing message:  
Press "1" then "2".  
Type message number (1-399) or use arrow keys then  
press "F6". Press "ENTER" twice.

To view battery voltage:  
Press "4" then "4". Press "ESCAPE" twice when finished.

Log-in screen abbreviations:  
BAT(V) = Battery voltage  
SOL(I) = Solar panel charge current  
LVD = Low voltage disconnect  
3L-24 = 3 line display  
FM = Full matrix display (48x25)  
FMST = Full matrix display (48x28)

Message Center Computer  
Model: CPU-6M

NTCIP Compliant



3L-24(ST)  
BAT(V) = 0.0  
SOL(I) = 0.0

V0.02.32

123:48 PM 1/16/2019

USERNAME:  
PASSWORD:

**WORK AREA  
PROTECTION**

A HILL & SMITH INC. BRAND

Contains FCC ID: G910589  
This equipment has been tested and  
found to comply with the limits for a  
Class B digital device, pursuant to  
Part 15 of the FCC Rules.

Specifications are subject to change without notice.